

12W21



Located in the Flatiron District between Fifth and Sixth Avenues, 12 West 21st Street is a 12-story, 62,000 SF landmarked office building just a short walk from Madison Square Park, Gramercy Park and Chelsea. This stretch of 21st Street has been transformed by new residential and commercial developments which have been carefully preserved to retain the architectural integrity of this historic district. With its beautifully renovated lobby and open floor plans, the building houses service sector and tech tenants and is anchored with a social wellness club on the ground floor.

12 W 21ST ST

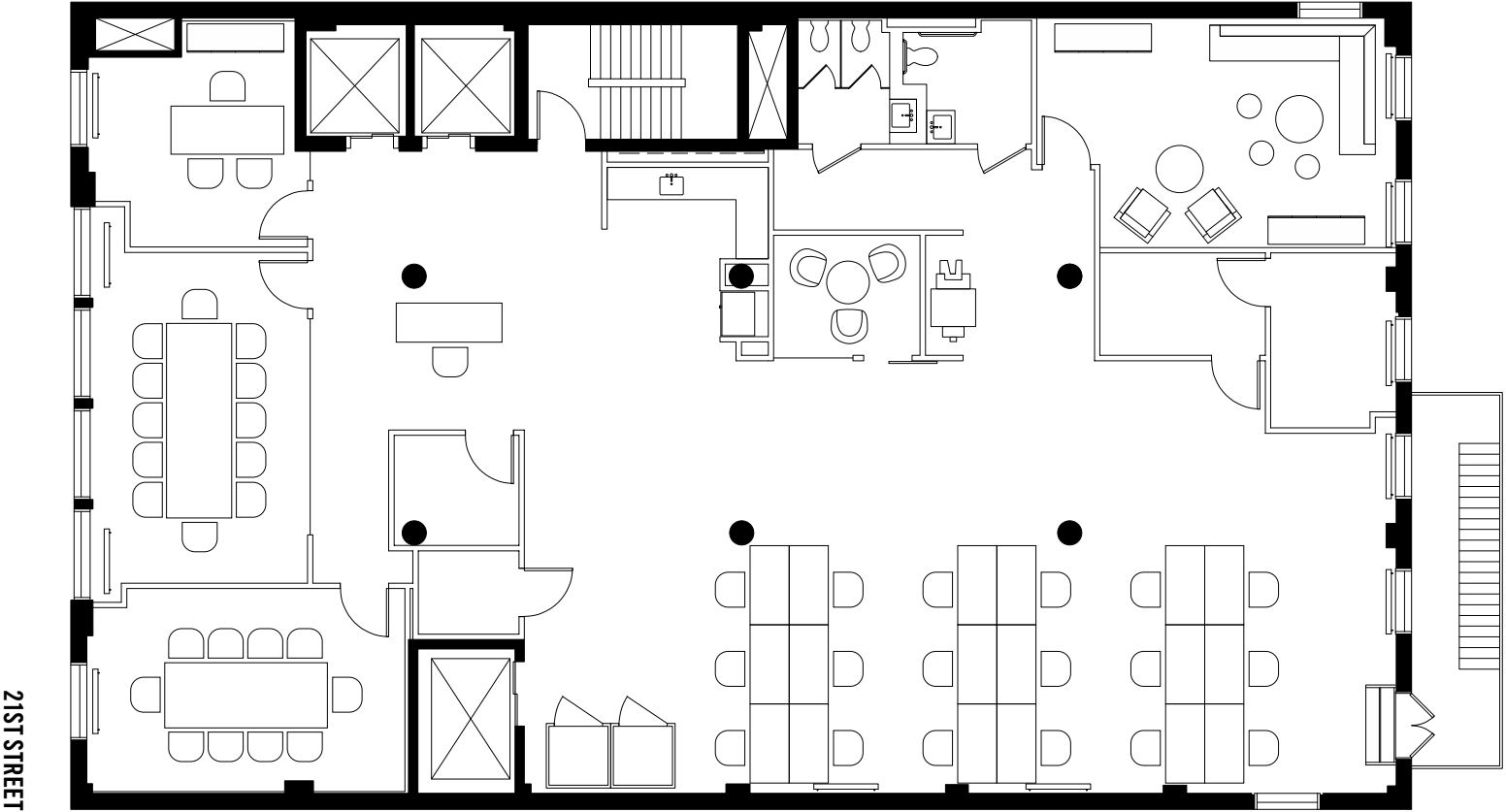
FEATURES

- Fully furnished and prewired
- In the heart of Flatiron
- Renovated and attended lobby
- Full floor presence
- Open and efficient layouts
- Abundant natural light
- Operable windows
- Exposed ceilings and hardwood floor
- Citi Bike stations and parking nearby
- Easily accessible by N, Q, R, W, 1, 6, PATH train



ENTIRE 10TH FLOOR—EXISTING CONDITIONS
PROPOSED FURNITURE PLAN
5,300 SF FULL FLOOR OPPORTUNITY

Phone Room	2	Private Offices	1
Conference Room	3	Pantry	1
Workstation	18	Reception	1



12 W 21ST ST 10TH FLOOR INTERIORS



COLLABORATION AREA



CONFERENCE ROOM



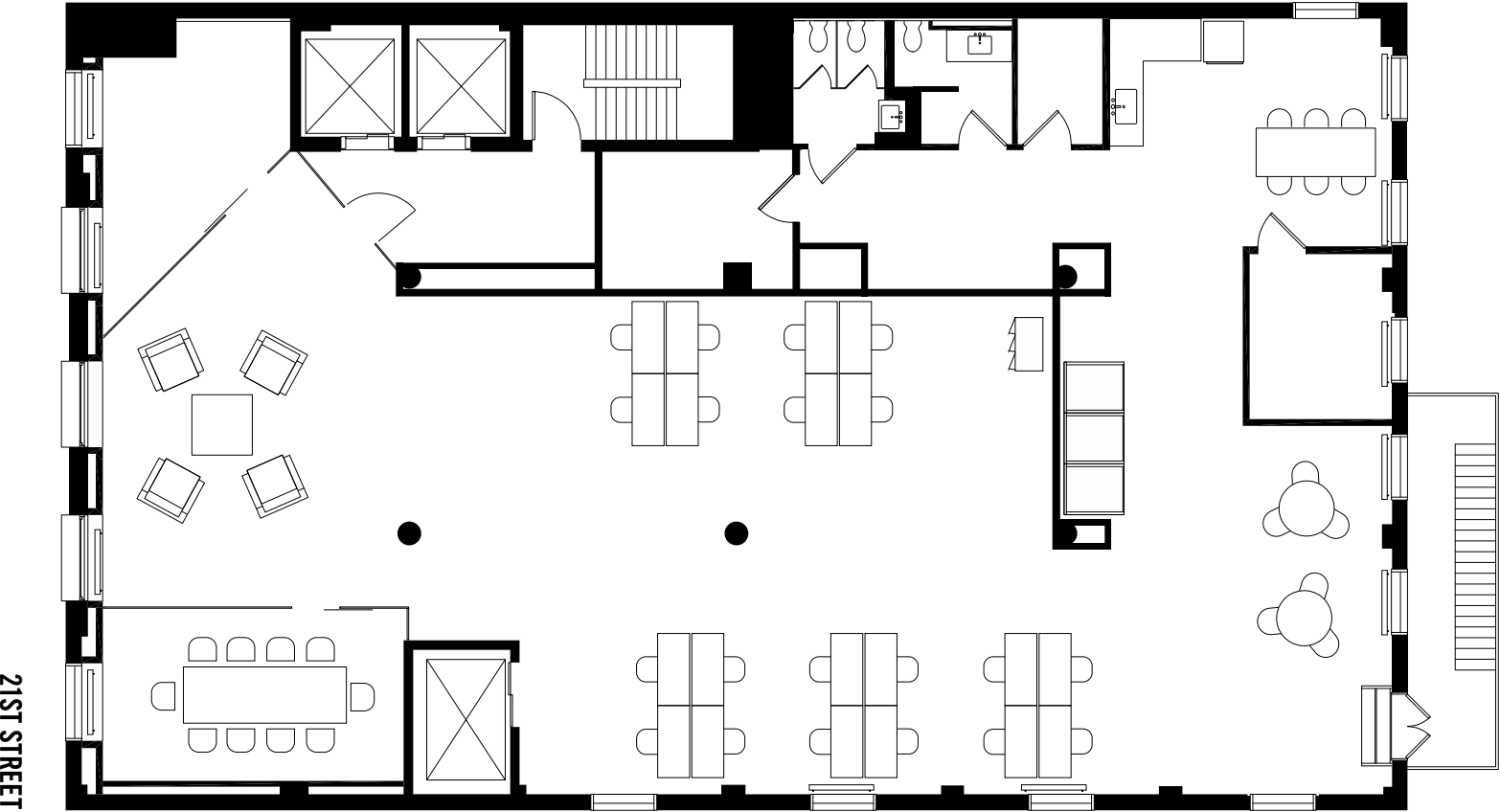
PANTRY



MEETING AREA

ENTIRE 11TH FLOOR
EXISTING CONDITIONS - 5,300 RSF

Conference Room	1	Workstation	20
Open Meeting	1	Lounge	1
Phone Booth	3	Pantry	1



12 W 21ST ST 11TH FLOOR INTERIORS



COLLABORATION AREA



CONFERENCE ROOM



PANTRY



OPEN WORKSTATIONS

12 W 21ST ST DISCOVERING NOMAD



12 W 21ST ST DISCOVERING NOMAD

RESTAURANTS

- 230 Fifth Rooftop Bar
- Eleven Madison Park
- Planta
- Junoon
- Deep
- Marta
- Tavern 29
- Tacombi Flat Iron
- Shake Shack
- Sweetgreen
- The Smith
- La Pecora Bianca
- Hillstone
- Waldy's
- Vin Sur Vingt Wine Bar
- Chipotle Mexican Grill
- ILILI
- Ayza Wine and Chocolate Bar
- Ravagh
- Shorty's
- Melt Shop
- Bombay Sandwich Co.
- Wagamama
- Hill Country Barbeque
- IchiUmi
- The Ivory Peacock
- Joe & the Juice
- Anita La Mamma del Gelato
- Oscar Wilde

AMENITIES

- Madison Square Park
- Mad. Sq. Eats

HOTELS

- ACE Hotel
- Royalton Park Avenue
- Virgin Hotel
- The Ritz Carlton
- The NED

FITNESS

- Soul Cycle NoMad
- CrossFit NYC
- AKT Nomad
- Y7 Yoga Studio
- The Fort
- Plush Fitness
- Bodē NYC
- Souk
- Remedy Place

SUPERMARKETS

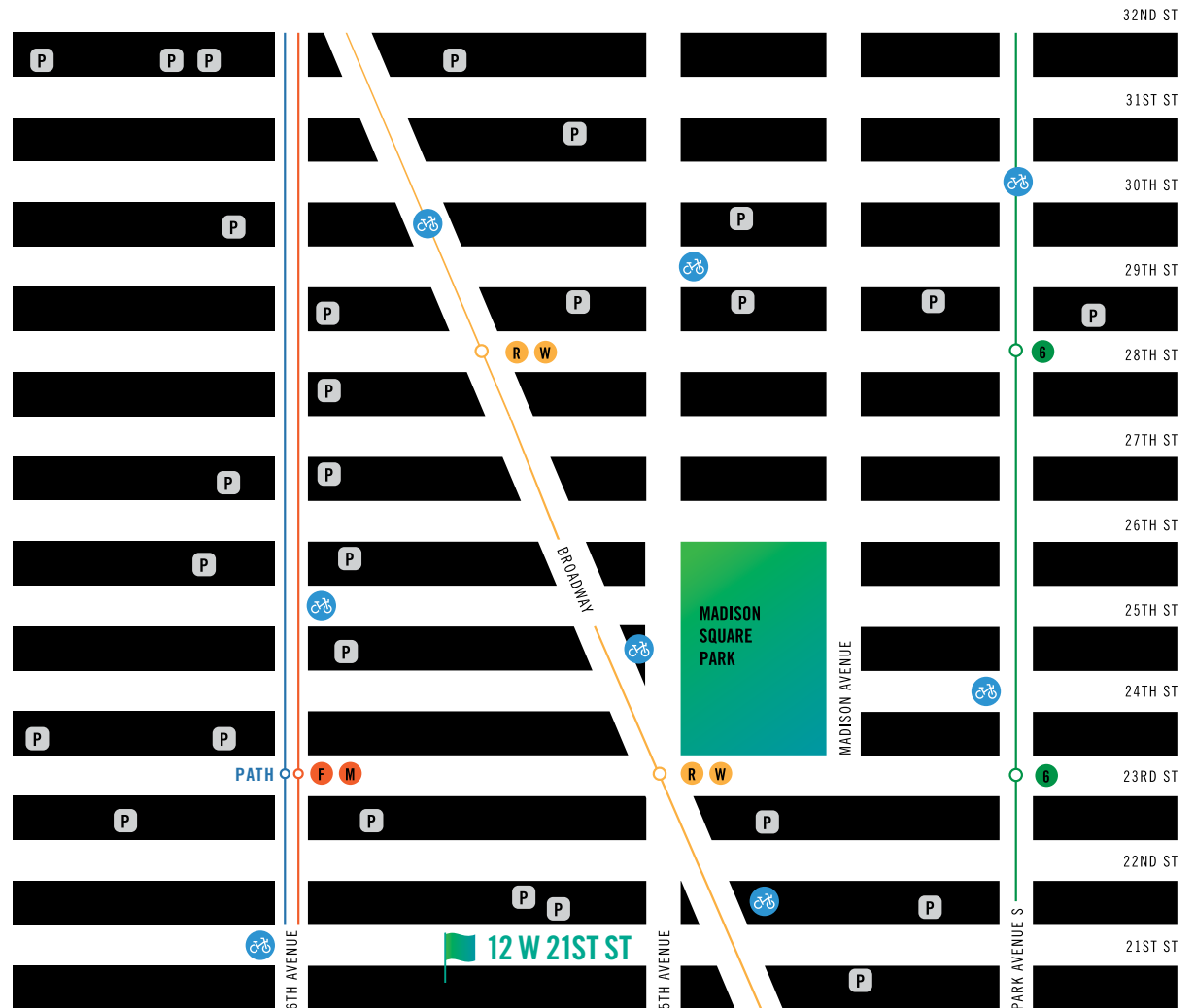
- Fairway Market Chelsea
- Eataly NYC Flatiron

PARKING

- 37 Lots

CITI BIKE

- 8 Stations





NOMAD
PORTFOLIO

LEARN MORE

212.337.7763

ADAM D. WEISSLEDER

Senior VP + Director of
Leasing
aweissleder@merprop.com

AMY FABIAN

Vice President Leasing
afabian@merprop.com

MAUREEN DELEHANTY

Leasing + Marketing
Coordinator
mdelehanty@merprop.com



THENOMADPORTFOLIO.COM